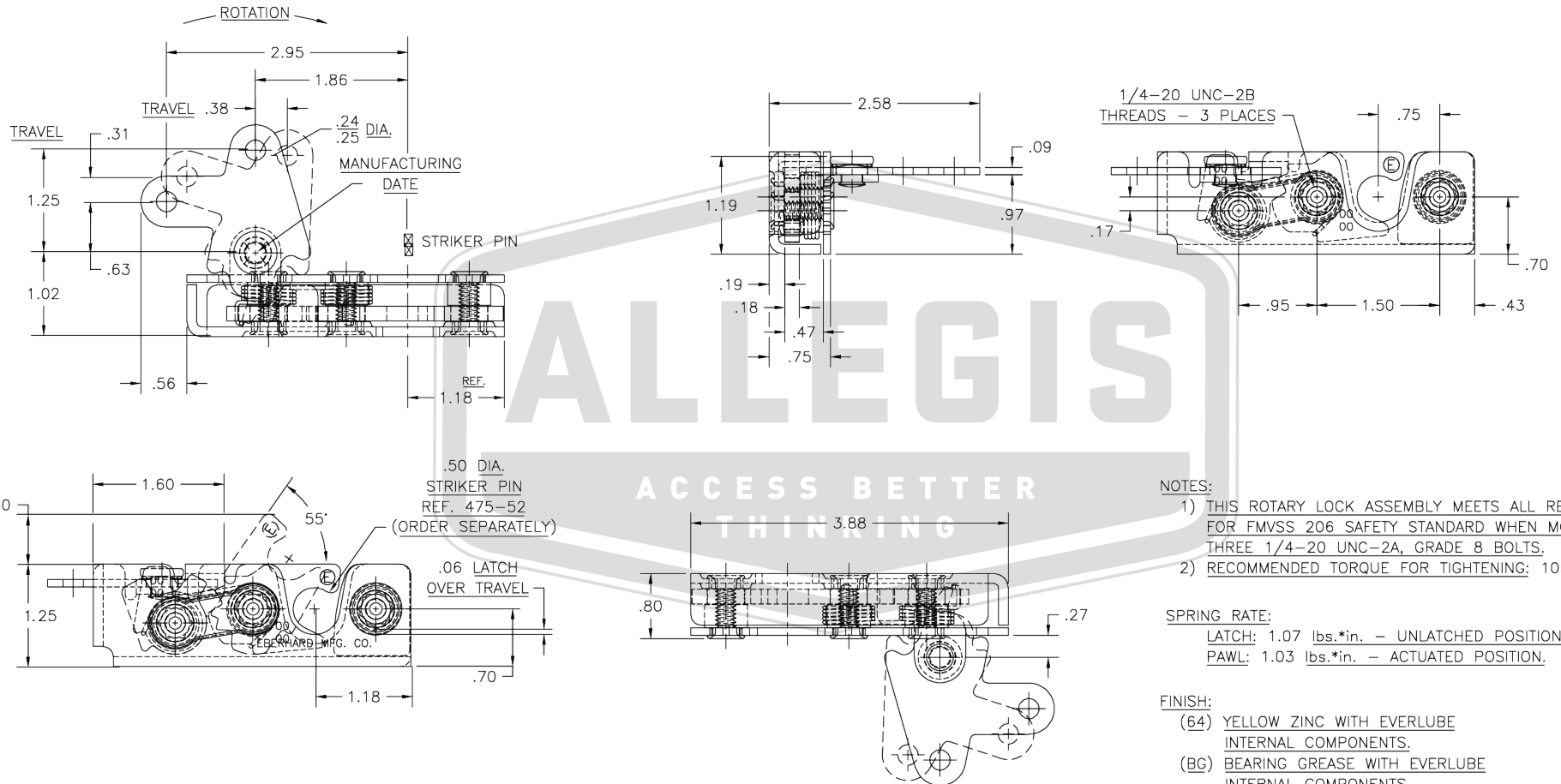


APPROVAL - CUSTOMER NAME & SIGNATURE

DATE



NOTES:

- 1) THIS ROTARY LOCK ASSEMBLY MEETS ALL REQUIREMENTS FOR FMVSS 206 SAFETY STANDARD WHEN MOUNTED WITH THREE 1/4-20 UNC-2A, GRADE 8 BOLTS.
- 2) RECOMMENDED TORQUE FOR TIGHTENING: 105 ±10 in./lbs.

SPRING RATE:

LATCH: 1.07 lbs.*in. - UNLATCHED POSITION.
 PAWL: 1.03 lbs.*in. - ACTUATED POSITION.

FINISH:

- (64) YELLOW ZINC WITH EVERLUBE INTERNAL COMPONENTS.
- (BG) BEARING GREASE WITH EVERLUBE INTERNAL COMPONENTS.

ALLEGIS		1-866-378-7550
MATERIAL:	DRAWING NO. :	
	1T-475 L	
FINISH:		
REV.:	1:1	DATE: 6/11/2019